



SENATOR JOHN HEINZ

HISTORY CENTER

IN ASSOCIATION WITH THE SMITHSONIAN INSTITUTION



Andy Masich, CEO

Heinz History Center

Rob Pfaffmann, AIA

Pfaffmann + Associates, Architect & Planners

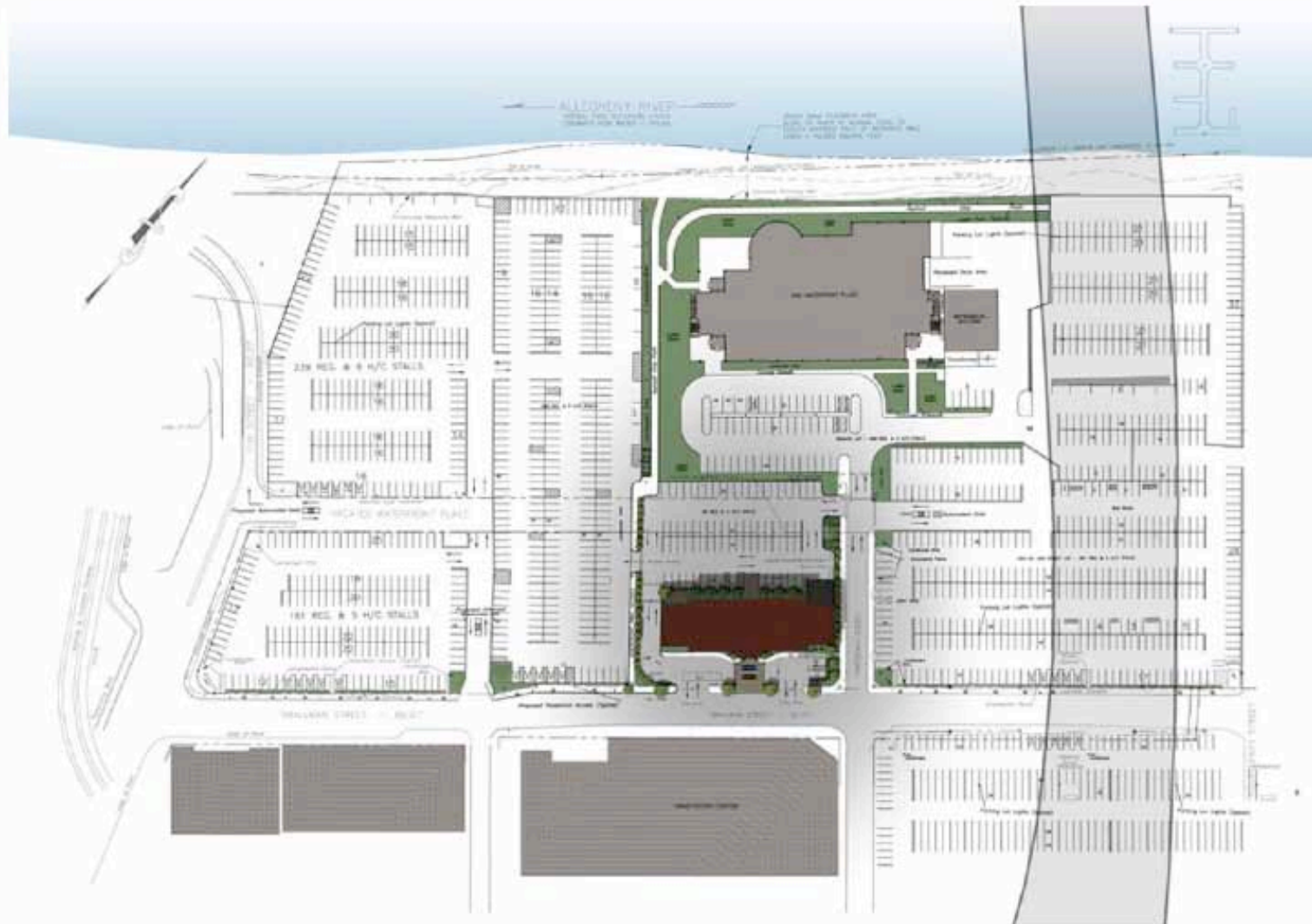
The Strip District

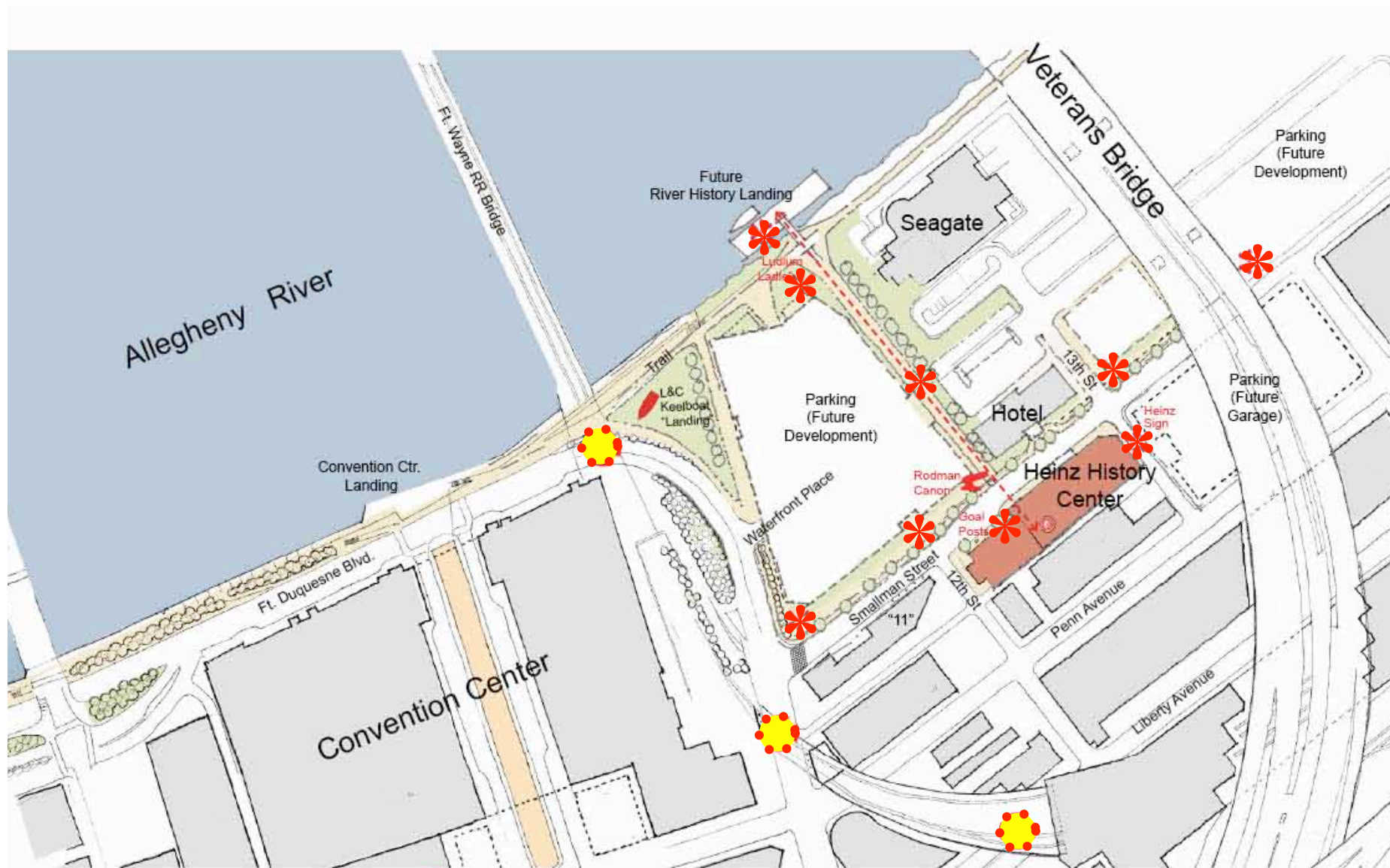




Image © 2008 Sanborn
© 2007 Sanborn
© 2007 Europa Technologies
Image © 2008 DigitalGlobe

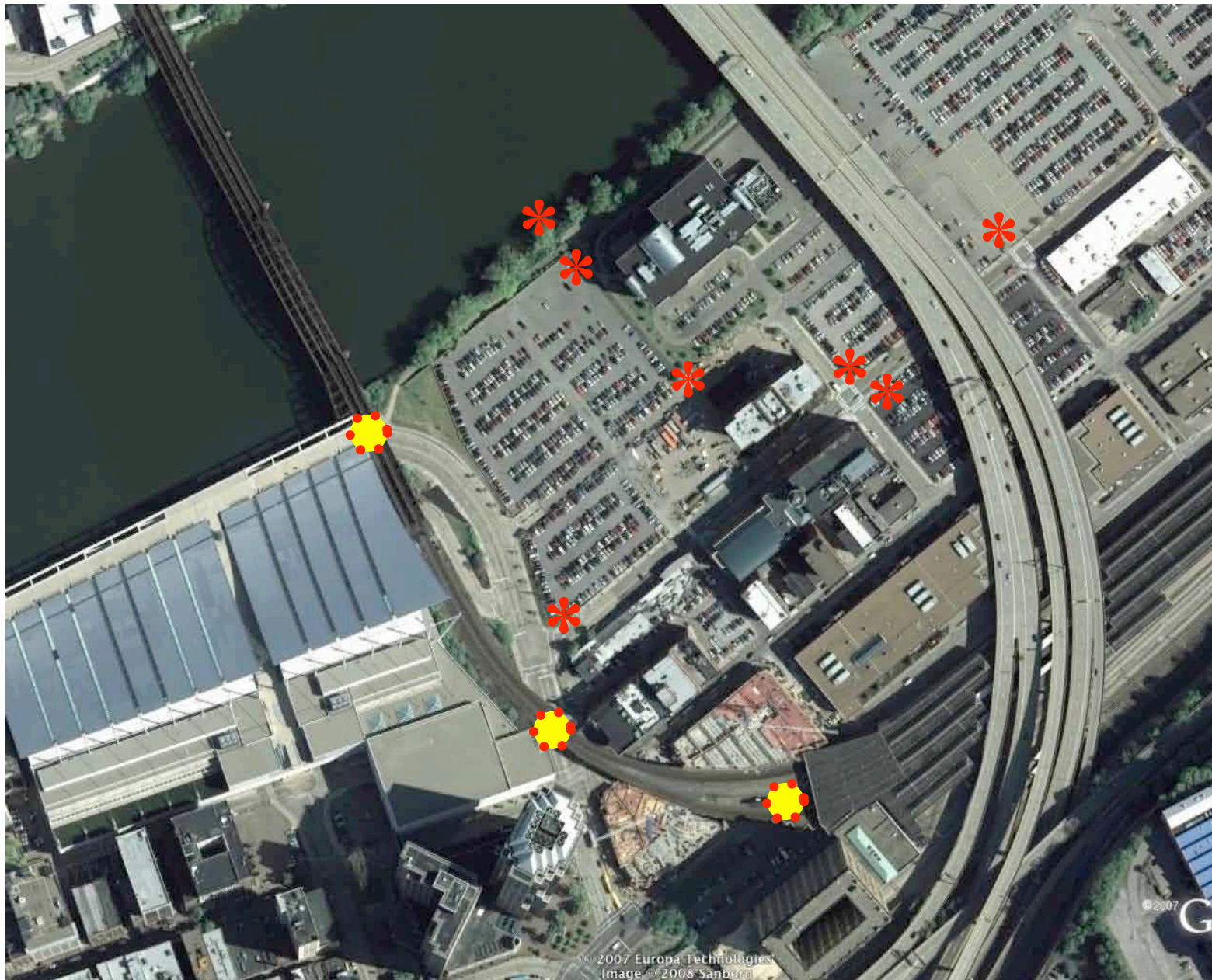
© 2007 Google™



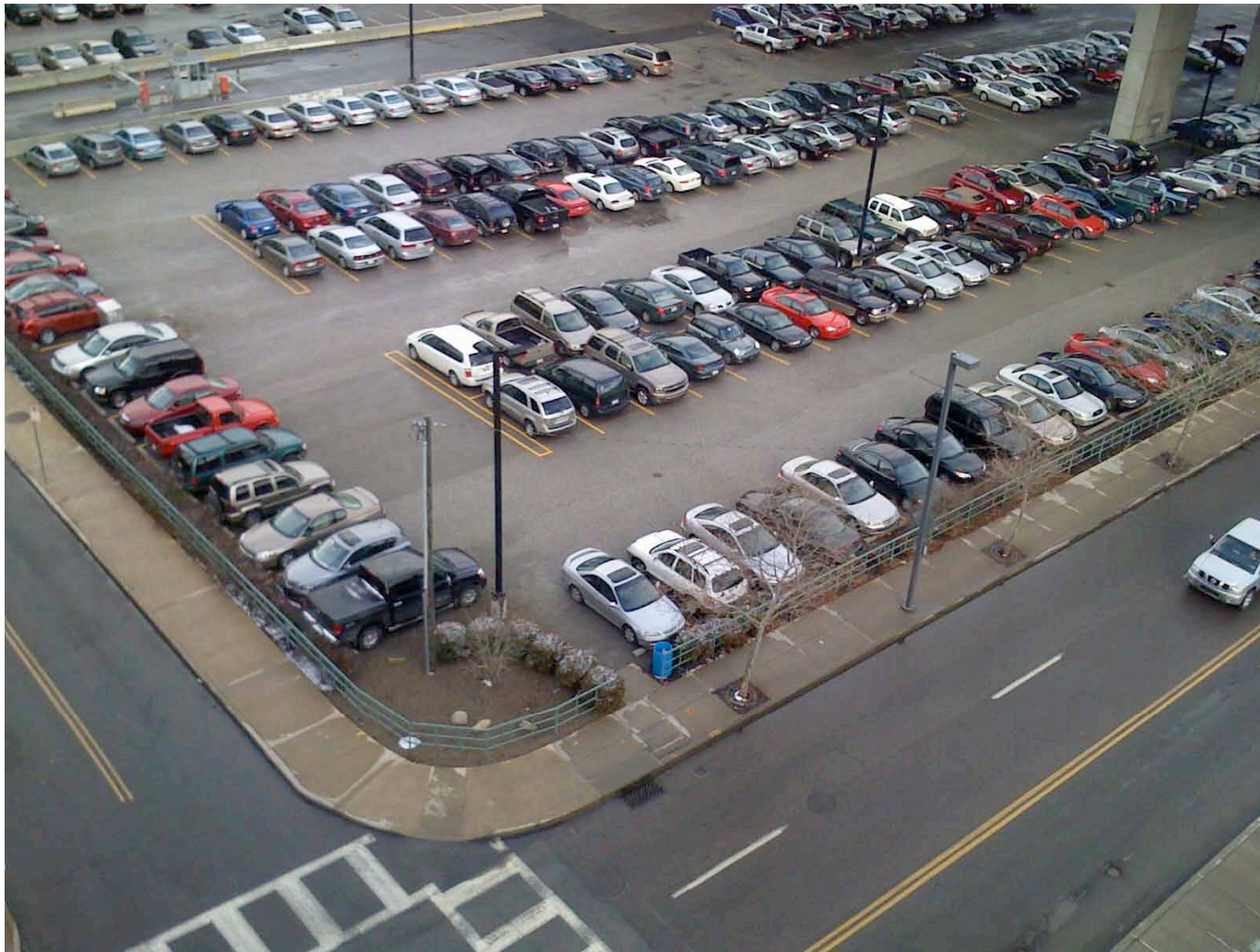


 **Portal**

 **Iconic Artifact Locations**







History Walk to River



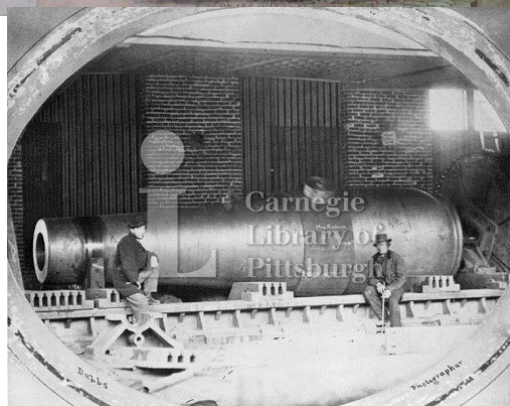
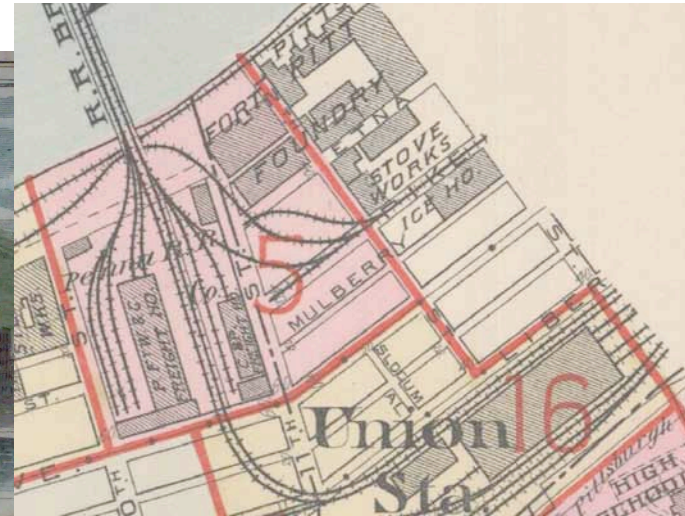
The Rodman Canon



"20 inch, No. 1, Fort Pitt, 116,497 lbs."

"The five years of the Civil War are quite rightly considered a period of ordinance and artillery experimentation, development, and transition. The work of one man led, in fact, to the casting of one of the biggest guns ever built, even to the present day--a monstrous 20-inch muzzle-loader that fired a 1,000-pound solid shot."

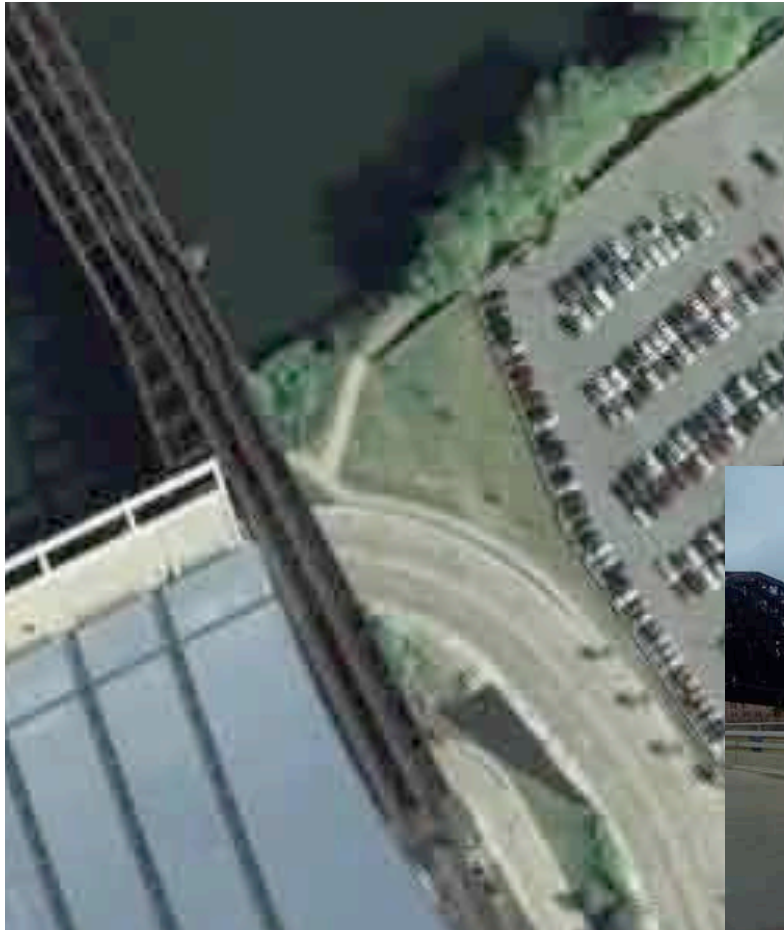
The Ft. Pitt Foundry



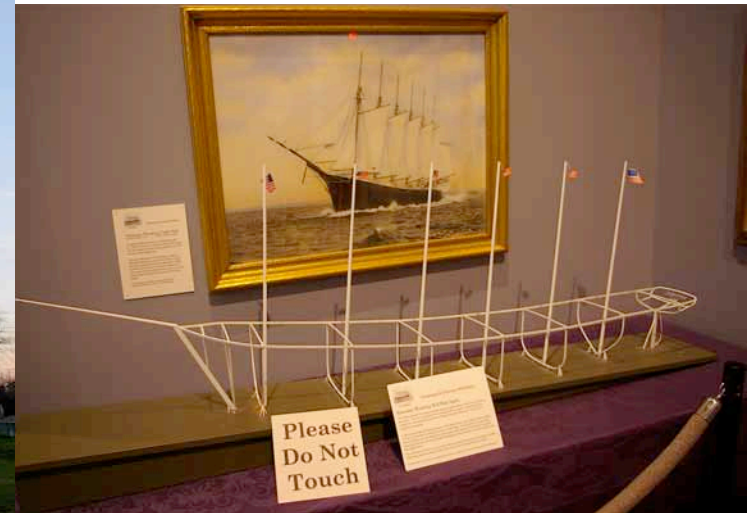




The Keelboat



The 6-Masted Schooner Wyoming Bath, Maine



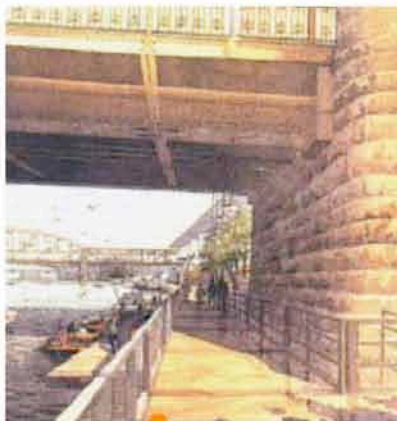
The Ladle



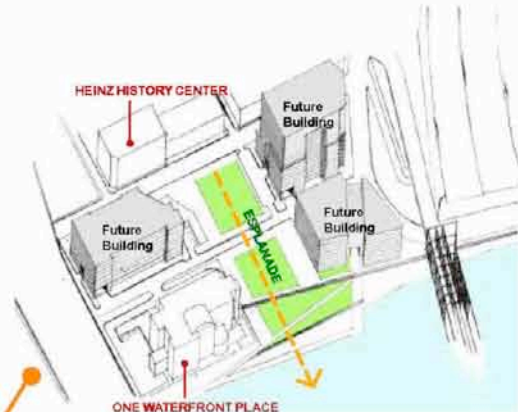
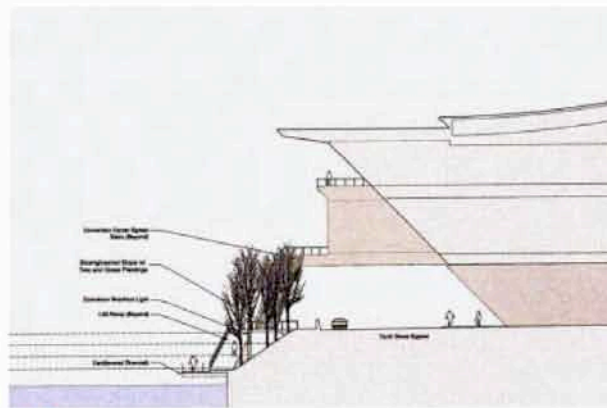
Pennsylvania RR History



Connection to River



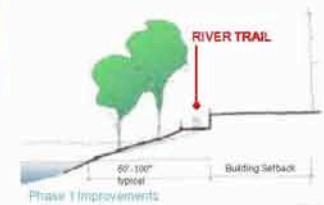
Water transit landing at the Allegheny Riverfront Park near the Ninth Street Bridge (left). Section showing the extension of the Allegheny Riverfront Park at the Convention Center (right). (Michael Van Valkenburgh Associates).



Development alternative with an esplanade connecting the Heinz History Center to the riverfront.

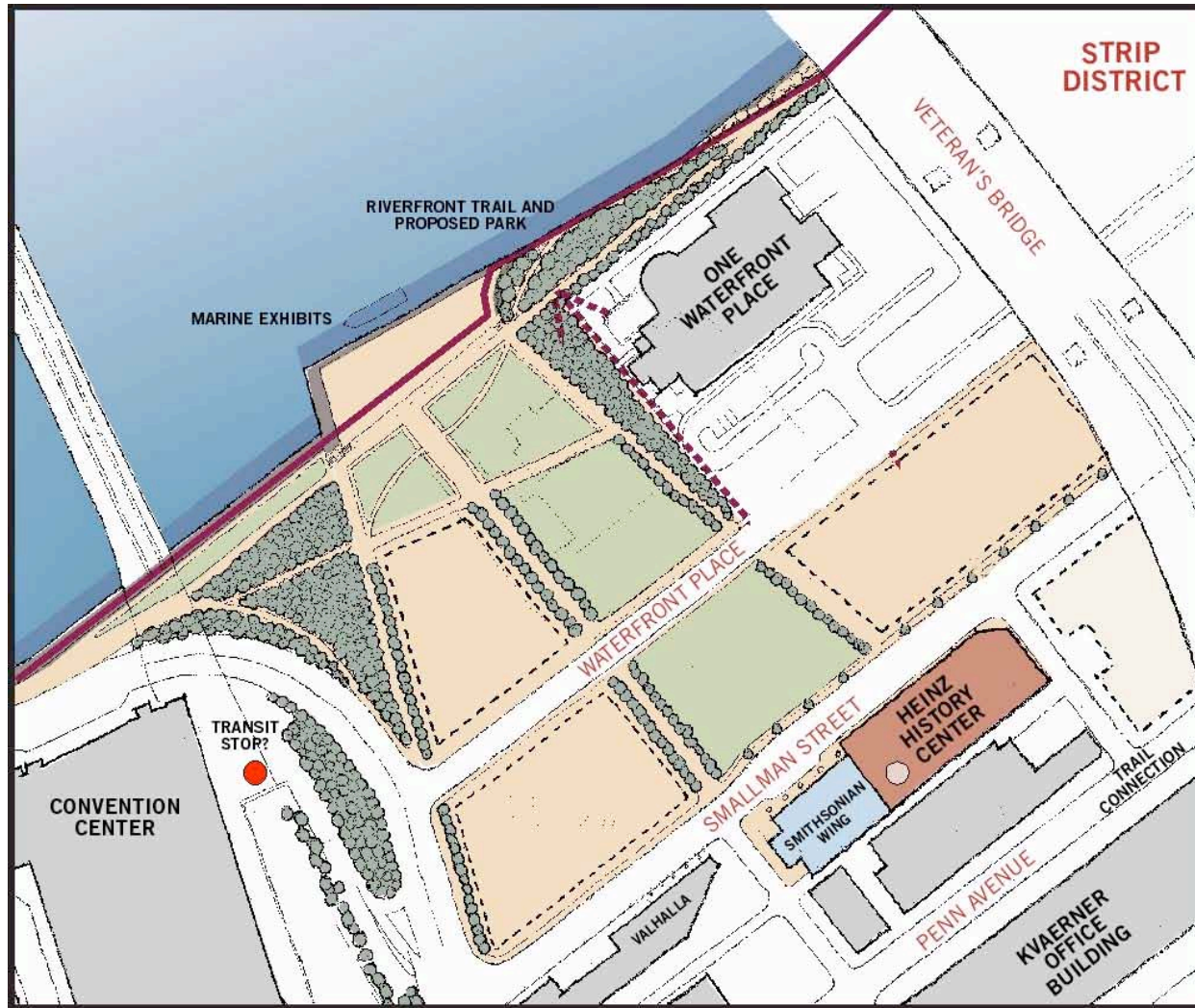


Schematic plan for the extension of Allegheny Riverfront Park eastward into the Strip District.

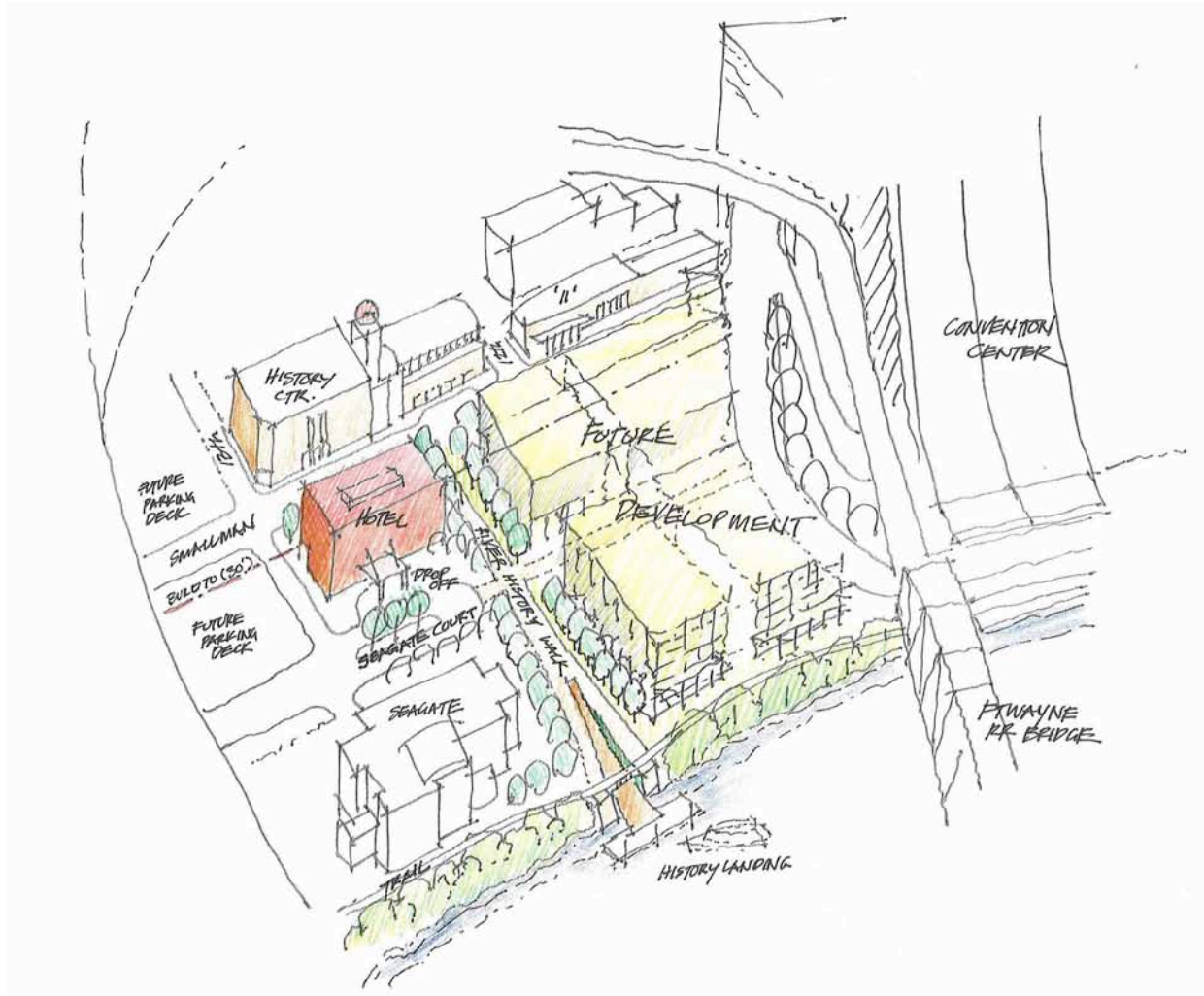


Phased improvements at 1 Waterfront Place will add access to the river trail for employees and the public.

Connection to River



Connection to River



Connection to River

